



tile

DESIGN IS LIBERATED
ACTIVATE THE EDGE

ON THE
EDGE
18X36



shaw contract group



ABSTRACT EDGE

HORIZONTAL EDGE

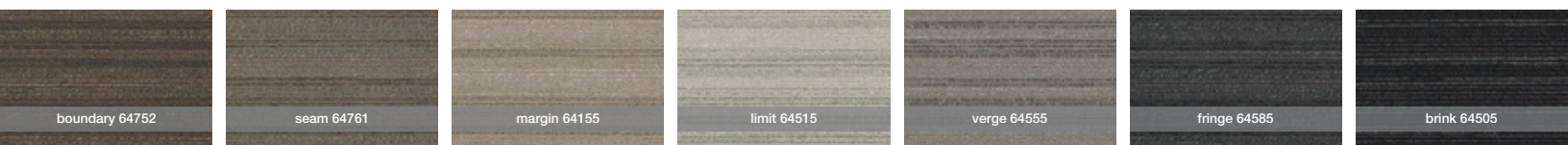
MINIMAL

MERGE

VERTICAL EDGE +
COLOUR PLANK

COLOUR PLANK is the perfect partner. All On The Edge base and accent colors are available in Colour Plank. To see all 21 colors, visit www.shawcontractgroup.com.

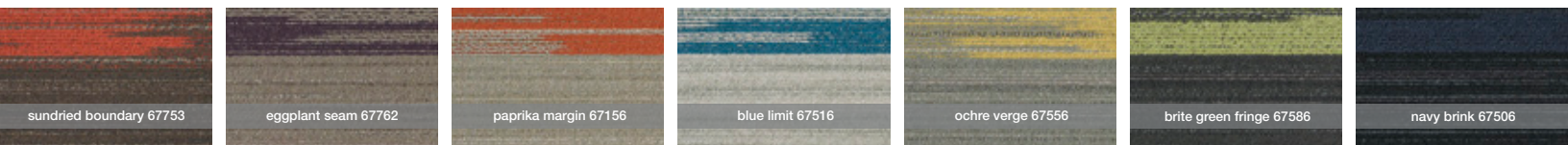
MINIMAL



MERGE • ABSTRACT EDGE • HORIZONTAL EDGE • VERTICAL EDGE*



MERGE • ABSTRACT EDGE • HORIZONTAL EDGE • VERTICAL EDGE*



*shown in vertical edge

ACTIVATE THE EDGE. Align the edges of the carpet to create endless patterns and add a whole new dimension to your design. Add scale, create movement and point the way. For traditional installation methods, follow the arrows. To activate the edge, follow your instinct. Design is liberated.



product specifications

Face weight:

Tile

abstract edge: 22 oz
horizontal edge: 22 oz
merge: 18 oz
minimal: 18 oz
colour plank: 30 oz
vertical edge: 22 oz



Fiber:

Eco Solution Q®

Backing:

EcoWorx® Tile

For more information on **On The Edge** contact your local Shaw Contract Group representative, visit us at www.shawcontractgroup.com or call 877-502-SHAW.

tile specifications

style name	vertical edge tile
style number	59114
construction	multi-level pattern loop
fiber	eco solution q® nylon
dye method	92% solution dyed / 8% yarn dyed

	english	metric

pattern repeat	none	
tufted weight	22.0	745.93 g/m ²
gauge	1/12	47.24 per 10 cm
stitches per inch	11.0	43.31 per 10 cm
finished pile thickness	0.118	3.00 mm
total thickness	0.252	6.40 mm
average density	6712	12.50 kilotex
product size	18" x 36"	45.72 cm x 91.44 cm
primary backing	synthetic	
secondary backing	ecoworx® tile	
protective treatments	ssp® shaw soil protection	
gsa approved product	yes	



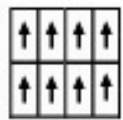
testing

radiant panel	Class I
nbs smoke	less than 450
electrostatic propensity	less than 3.5 kv

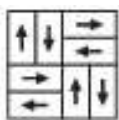
warranties

lifetime commercial limited

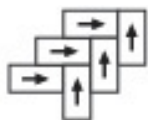
installation method



monolithic



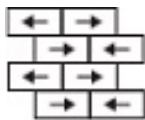
basketweave



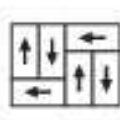
herringbone



boxed in



brick



half basketweave

coordinating products

horizontal edge tile, abstract edge tile, minimal tile, merge tile

environmental certification

green label plus certification number	glp9968
nsf140 platinum	
cradle to cradle silver certified	



eco impacts

vertical edge tile

end of life

recyclability	100% recyclable
shaw closed looped recycling	0.0%
environmental guarantee	free pick up & recycling
To recycle call 800.509.SHAW	

materials

ingredients

face fiber	nylon 6
dye method	92% solution dyed / 8% yarn dyed
backing	polyolefin composite
surface treatments	non c8 fluorocarbon chemistry
does not contain PVC, phthalates, or PBD/PBDE	

recycled content

total recycled content (by weight)	39.8 %
pre-consumer	27.9 %
post-consumer	11.9 %
bio-based/rapidly renewable content (by weight)	0.0 %
packaging	100% recyclable
country of origin (manufacturer)	USA

Meets or exceeds all local and national regulations in country of manufacture.
Manufactured in an ISO9001 & ISO14001 certified facility or equivalent.
Recycled content is calculated using system allocation, mass balance, and direct insertion.
The actual recycled content in this product will likely vary. For more information email info@shawgreenedge.com.

third party certifications

MBDC cradle to cradle	silver certified
NSF 140	platinum certified
CRI green label plus	certified glp9968
USGBC LEED	contributes
Building Research Establishment	certified
Good Environmental Choice Australia	certified
Good Environmental Choice New Zealand	certified
Singapore green label	certified 039-003

social responsibility

Shaw and our people provide financial support, volunteer service and leadership for charitable and civic organizations in the communities where we work and live. Additionally, we strive to adhere to all applicable laws regarding labor, discrimination and harassment, wages and benefits, health and safety, diversity and equal opportunity.